



Name \_\_\_\_\_

Address \_\_\_\_\_

Street

Town

Phone

Current 4-H Age \_\_\_\_\_

Years in 4-H \_\_\_\_\_

Years in Poultry Project \_\_\_\_\_

Date of Show \_\_\_\_\_

Record Started \_\_\_\_\_

Month

Day

Year

Record Closed \_\_\_\_\_

Month

Day

Year

Indicate which market specie(s) of market birds are included in this journal.

Note: This journal must contain records for all units to be sold at fair. Journal (including project pictures) should be presented for judging in a binder and should contain records from previous years market poultry projects.

- Turkey
- Duck
- Goose
- Roaster Chicken
- Fryer Chicken



**Project Information**

**ID = T – Turkey, D – Duck, G – Goose, Cr – Roaster Chicken, Cf – Fryer Chicken**

| <b>Bird ID</b> | <b>Number of Birds Purchased</b> | <b>Date Of Arrival</b> | <b>Breed</b> | <b>Purchase Price At Start</b> | <b>Died</b> | <b>Sold</b> | <b>Kept</b> |
|----------------|----------------------------------|------------------------|--------------|--------------------------------|-------------|-------------|-------------|
|                |                                  |                        |              |                                |             |             |             |
|                |                                  |                        |              |                                |             |             |             |

**Weight Records for Meat Birds – Unit #1**

**Weights are to be taken on all birds weekly.**

**ID = T – Turkey, D – Duck, G – Goose, Cr – Roaster Chicken, Cf – Fryer Chicken**

| <b>ID of Bird</b> | <b>Wt. at purchase</b> | <b>Wt</b> | <b>Wt</b> | <b>Wt</b> | <b>Wt</b> | <b>Wt</b> | <b>Wt</b> | <b>Wt</b> | <b>Wt</b> | <b>Wt</b> | <b>Wt</b> | <b>Fair Wt.</b> |
|-------------------|------------------------|-----------|-----------|-----------|-----------|-----------|-----------|-----------|-----------|-----------|-----------|-----------------|
|                   |                        |           |           |           |           |           |           |           |           |           |           |                 |
|                   |                        |           |           |           |           |           |           |           |           |           |           |                 |
|                   |                        |           |           |           |           |           |           |           |           |           |           |                 |
|                   |                        |           |           |           |           |           |           |           |           |           |           |                 |
|                   |                        |           |           |           |           |           |           |           |           |           |           |                 |
|                   |                        |           |           |           |           |           |           |           |           |           |           |                 |

| <b>ID of Bird</b> | <b>Wt</b> | <b>Wt</b> | <b>Wt</b> | <b>Wt</b> | <b>Wt</b> | <b>Wt</b> |
|-------------------|-----------|-----------|-----------|-----------|-----------|-----------|
|                   |           |           |           |           |           |           |
|                   |           |           |           |           |           |           |
|                   |           |           |           |           |           |           |
|                   |           |           |           |           |           |           |
|                   |           |           |           |           |           |           |

**Weight Records for Meat Birds – Unit #2**

Weights are to be taken on all birds Bi-Weekly.

ID = T – turkey, D – duck, G – goose, Cr – Roaster Chicken, Cf – Fryer Chicken

| ID of Bird | Wt. at purchase | Wt | Wt | Wt | Wt | Wt | Wt | Wt | Wt | Wt | Wt | Fair Wt. |
|------------|-----------------|----|----|----|----|----|----|----|----|----|----|----------|
|            |                 |    |    |    |    |    |    |    |    |    |    |          |
|            |                 |    |    |    |    |    |    |    |    |    |    |          |
|            |                 |    |    |    |    |    |    |    |    |    |    |          |
|            |                 |    |    |    |    |    |    |    |    |    |    |          |
|            |                 |    |    |    |    |    |    |    |    |    |    |          |
|            |                 |    |    |    |    |    |    |    |    |    |    |          |

| ID of Bird | Wt | Wt | Wt | Wt | Wt | Wt |
|------------|----|----|----|----|----|----|
|            |    |    |    |    |    |    |
|            |    |    |    |    |    |    |
|            |    |    |    |    |    |    |
|            |    |    |    |    |    |    |
|            |    |    |    |    |    |    |



## Educational Section

### Diseases and Parasites

This section is to be done on a separate sheet of paper typed or written neatly.

Juniors- Choose ONE. Disease OR parasite. Tell the symptoms, cure, and any preventive measures you can take. Must be a different disease or parasite for each year you are a junior.

Intermediate- Choose ONE disease AND ONE parasite. Tell the symptoms, cure, and preventive measures you can take. Must be a different disease and parasite for each year and different from juniors.

Seniors- Choose TWO diseases AND TWO parasites. Can be same from previous years but MUST BE more in-depth.

## QUESTIONS

This section is also to be done on a separate sheet of paper typed or written neatly.

1. What did you do to ensure a quality bird for fair and your buyer?
2. How often did you clean your pens? What kind of bedding did you use and why?
3. What type or types of housing do you have for your birds and what precautions did you take towards predators, heat and cold? (be specific and show pictures)

**\* Be sure to include pictures of you and your birds from beginning to end\***

## Anatomy

**Label only the market bird or birds you are taking to fair.**

**Juniors- 12 parts**

**Intermediates- 15 parts**

**Seniors- 20+ parts**

***Project Summary***

One summary is needed for each type of bird –  
ex. if both sale units are turkeys you will only need one summary

***Inventory –***

- 1. Type of bird \_\_\_\_\_
- 2. Number of birds at beginning of project \_\_\_\_\_
- 3. Number of Birds at close of project \_\_\_\_\_
- 4. Number of birds to be sold at fair \_\_\_\_\_
- 5. Total cost of feed for birds \$ \_\_\_\_\_
- 6. Other expenses to raise birds start to finish \$ \_\_\_\_\_  
(Manure fees, bedding, medicine)

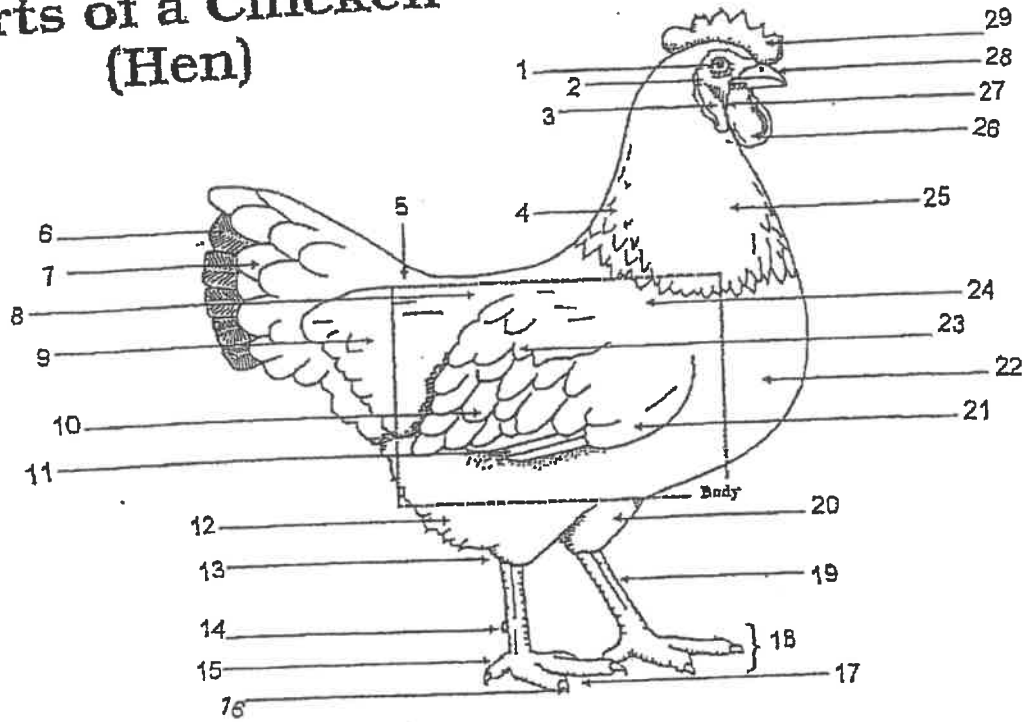
***Project Summary***

One summary is needed for each type of bird –  
ex. if both sale units are turkeys you will only need one summary

***Inventory –***

- 7. Type of bird \_\_\_\_\_
- 8. Number of birds at beginning of project \_\_\_\_\_
- 9. Number of Birds at close of project \_\_\_\_\_
- 10. Number of birds to be sold at fair \_\_\_\_\_
- 11. Total cost of feed for birds \$ \_\_\_\_\_
- 12. Other expenses to raise birds start to finish \$ \_\_\_\_\_  
(Manure fees, bedding, medicine)

# Parts of a Chicken (Hen)



**POULTRY**  
LEARNING LABORATORY KIT

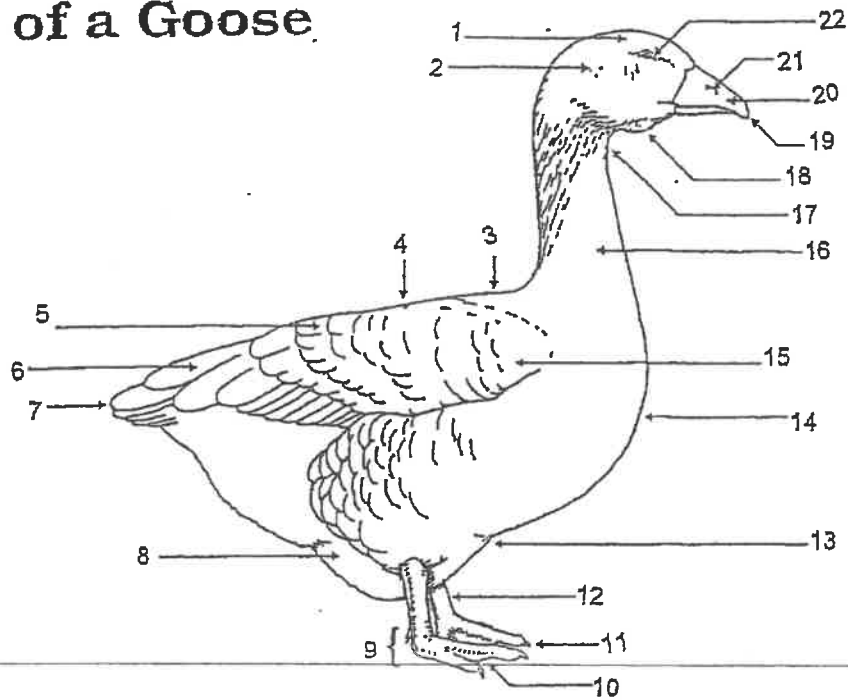
Animal Care and Production  
Youth Education Program

Product distribution through the Curriculum Materials Service

- 1 \_\_\_\_\_
- 2 \_\_\_\_\_
- 3 \_\_\_\_\_
- 4 \_\_\_\_\_
- 5 \_\_\_\_\_
- 6 \_\_\_\_\_
- 7 \_\_\_\_\_
- 8 \_\_\_\_\_
- 9 \_\_\_\_\_
- 10 \_\_\_\_\_
- 11 \_\_\_\_\_
- 12 \_\_\_\_\_
- 13 \_\_\_\_\_
- 14 \_\_\_\_\_
- 15 \_\_\_\_\_

- 16 \_\_\_\_\_
- 17 \_\_\_\_\_
- 18 \_\_\_\_\_
- 19 \_\_\_\_\_
- 20 \_\_\_\_\_
- 21 \_\_\_\_\_
- 22 \_\_\_\_\_
- 23 \_\_\_\_\_
- 24 \_\_\_\_\_
- 25 \_\_\_\_\_
- 26 \_\_\_\_\_
- 27 \_\_\_\_\_
- 28 \_\_\_\_\_
- 29 \_\_\_\_\_

# Parts of a Goose



Animal Care and Production:  
Youth Education Program

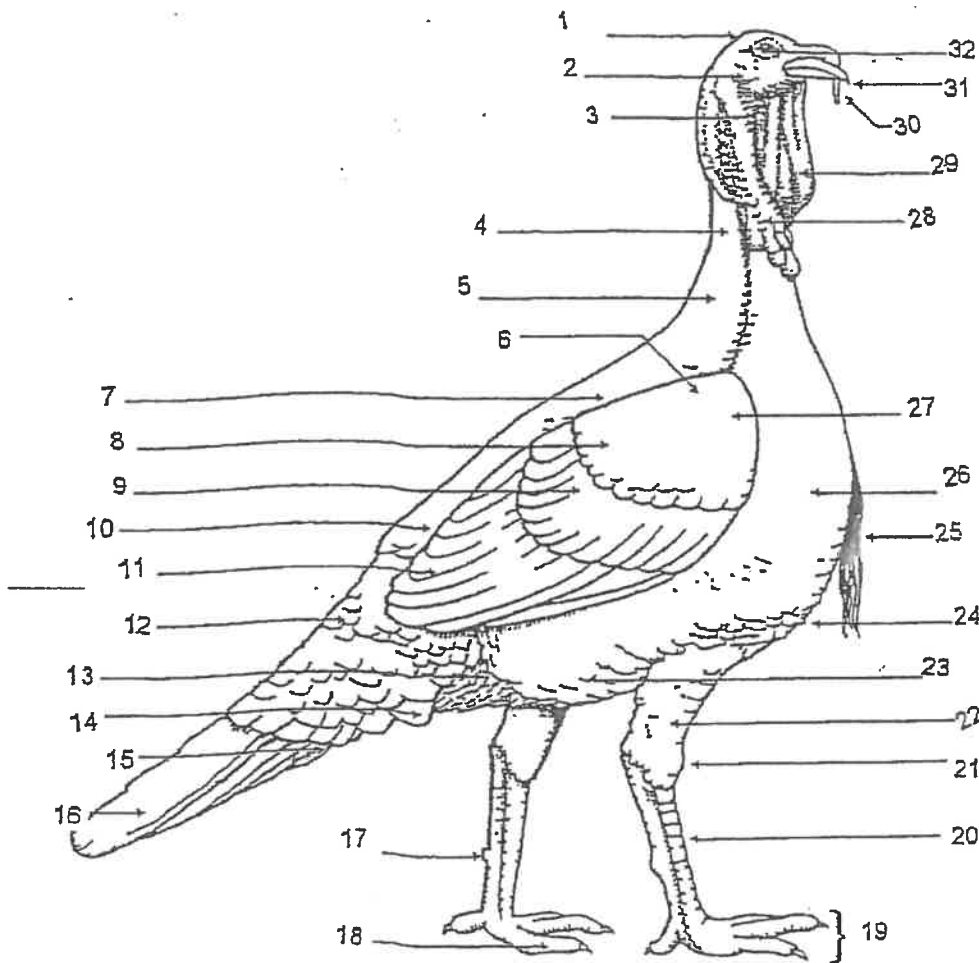
Product distribution through the Curriculum Materials Service

- 1 \_\_\_\_\_
- 2 \_\_\_\_\_
- 3 \_\_\_\_\_
- 4 \_\_\_\_\_
- 5 \_\_\_\_\_
- 6 \_\_\_\_\_
- 7 \_\_\_\_\_
- 8 \_\_\_\_\_
- 9 \_\_\_\_\_
- 10 \_\_\_\_\_
- 11 \_\_\_\_\_

- 12 \_\_\_\_\_
- 13 \_\_\_\_\_
- 14 \_\_\_\_\_
- 15 \_\_\_\_\_
- 16 \_\_\_\_\_
- 17 \_\_\_\_\_
- 18 \_\_\_\_\_
- 19 \_\_\_\_\_
- 20 \_\_\_\_\_
- 21 \_\_\_\_\_
- 22 \_\_\_\_\_



# Parts of a Turkey



- 10 \_\_\_\_\_
- 11 \_\_\_\_\_
- 12 \_\_\_\_\_
- 13 \_\_\_\_\_
- 14 \_\_\_\_\_
- 15 \_\_\_\_\_
- 16 \_\_\_\_\_
- 17 \_\_\_\_\_
- 18 \_\_\_\_\_
- 19 \_\_\_\_\_
- 20 \_\_\_\_\_
- 21 \_\_\_\_\_
- 22 \_\_\_\_\_
- 23 \_\_\_\_\_
- 24 \_\_\_\_\_
- 25 \_\_\_\_\_
- 26 \_\_\_\_\_
- 27 \_\_\_\_\_
- 28 \_\_\_\_\_
- 29 \_\_\_\_\_
- 30 \_\_\_\_\_
- 31 \_\_\_\_\_
- 32 \_\_\_\_\_

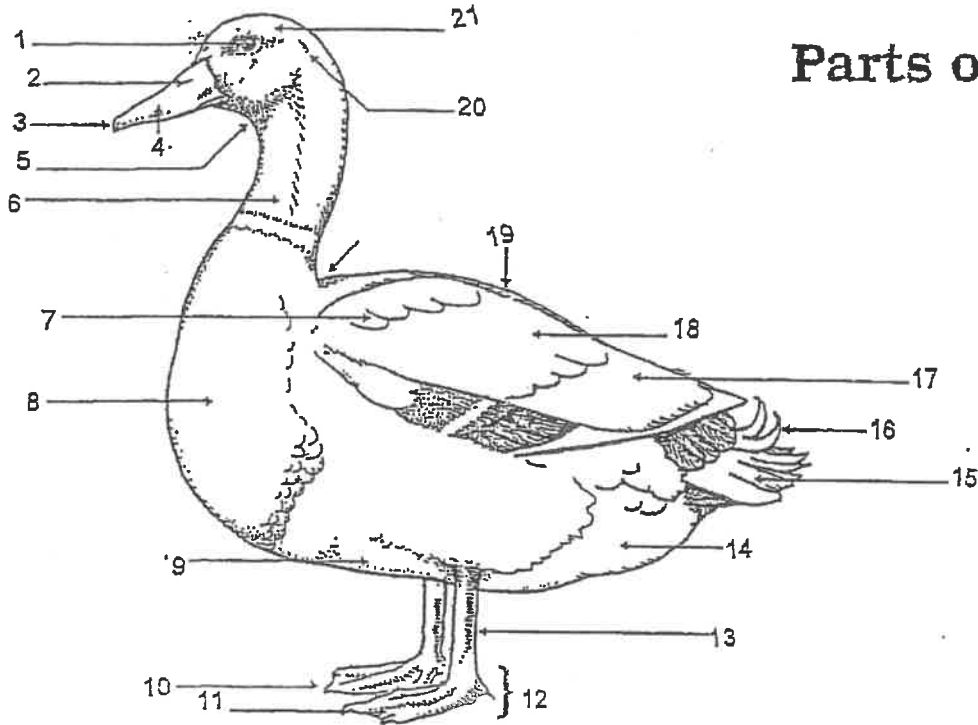


Animal Care and Production: Youth Education Program

Product distribution through the Curriculum Materials Service

- 1 \_\_\_\_\_
- 2 \_\_\_\_\_
- 3 \_\_\_\_\_
- 4 \_\_\_\_\_
- 5 \_\_\_\_\_
- 6 \_\_\_\_\_
- 7 \_\_\_\_\_
- 8 \_\_\_\_\_
- 9 \_\_\_\_\_

# Parts of a Duck



**POULTRY**  
LEARNING LABORATORY KIT

Animal Care and Production:  
Youth Education Program

Product distribution through the Curriculum Materials Service

- 1 \_\_\_\_\_
- 2 \_\_\_\_\_
- 3 \_\_\_\_\_
- 4 \_\_\_\_\_
- 5 \_\_\_\_\_
- 6 \_\_\_\_\_
- 7 \_\_\_\_\_
- 8 \_\_\_\_\_
- 9 \_\_\_\_\_
- 10 \_\_\_\_\_
- 11 \_\_\_\_\_

- 12 \_\_\_\_\_
- 13 \_\_\_\_\_
- 14 \_\_\_\_\_
- 15 \_\_\_\_\_
- 16 \_\_\_\_\_
- 17 \_\_\_\_\_
- 18 \_\_\_\_\_
- 19 \_\_\_\_\_
- 20 \_\_\_\_\_
- 21 \_\_\_\_\_